

**Integrated
Technology
Resources, Inc.**

About

Current Staff

- 1 Accounting – Purchasing /AP/AR
- 2 Controls engineers
- 1 Mechanical Engineer
- 2 panel builders
- 1 part time panel builder/shop assistant

Capabilities

- Full engineering services
 - Machine design
 - System design
 - Control panel design
 - Electrical Schematics
 - Safety analysis
 - PLC & HMI programming
 - Networking
 - On site troubleshooting

Capabilities

- UL 508A Listed Industrial Control Panel Shop
 - Large panels
 - Small panels
 - Cable assemblies
 - All panels built to UL/NEC standards
 - Heat shrink labels on both ends of all wires
 - Ferrules or ring terminals used wherever possible
 - Custom engraved name plates
 - Computer generated terminal block labeling
 - Finger and palm safe assembly
 - Aesthetically pleasing
 - Fully tested prior to shipment

Capabilities

- Machine updates/upgrades
 - Mechanical update
 - Electrical update
 - Add or improve machine safety
 - Update old relay logic to a PLC
 - Automate and improve production

Industries

Automotive

Pharmaceutical

Food & Beverage

Waste Water

Power distribution

Manufacturing

Custom control enclosure for Allison Transmission



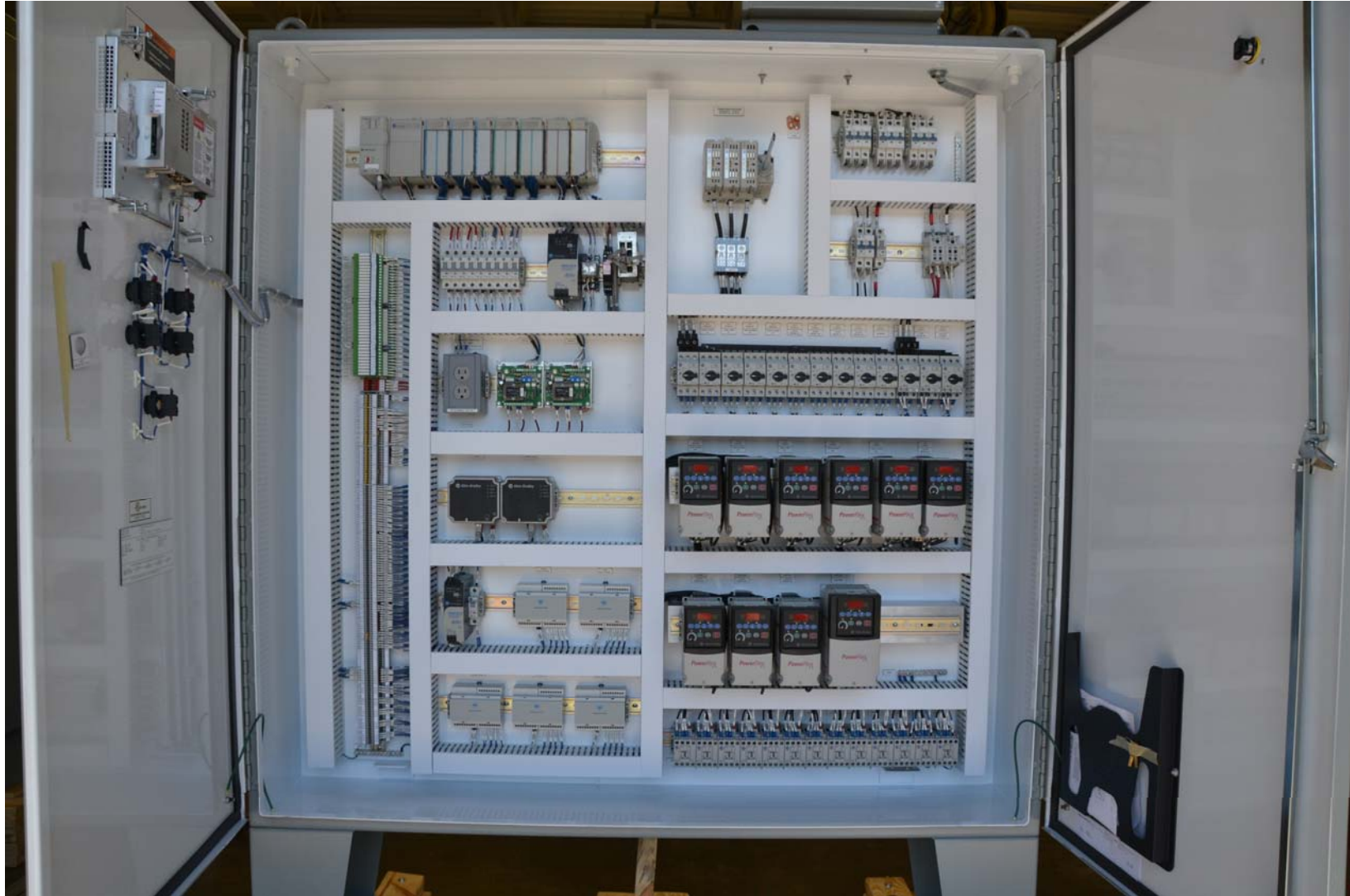
Custom desk with stainless top for SDI Pittsburro



Indianapolis – Belmont Waste Water facility



Conveyor system with 10 integrated scales





IPL Power
substation

Control and
monitoring
panel



Complete
machine
Design
and build



1999 Hog processing system refurbishment From the junk yard to usable.



1999 Hog processing system refurbishment completed with new motors and controls.

